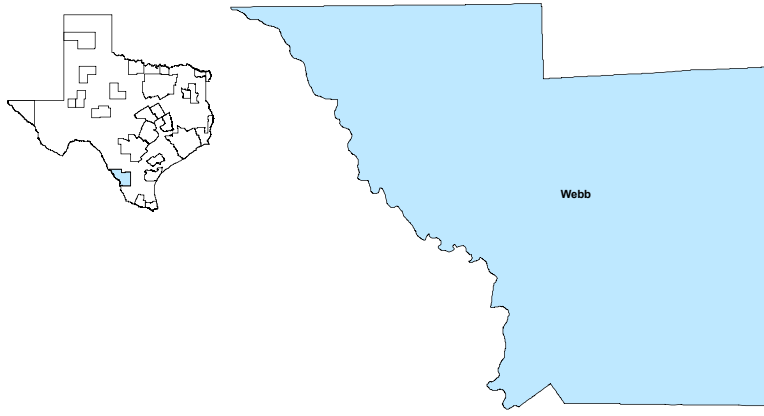


Laredo MSA

February 2020

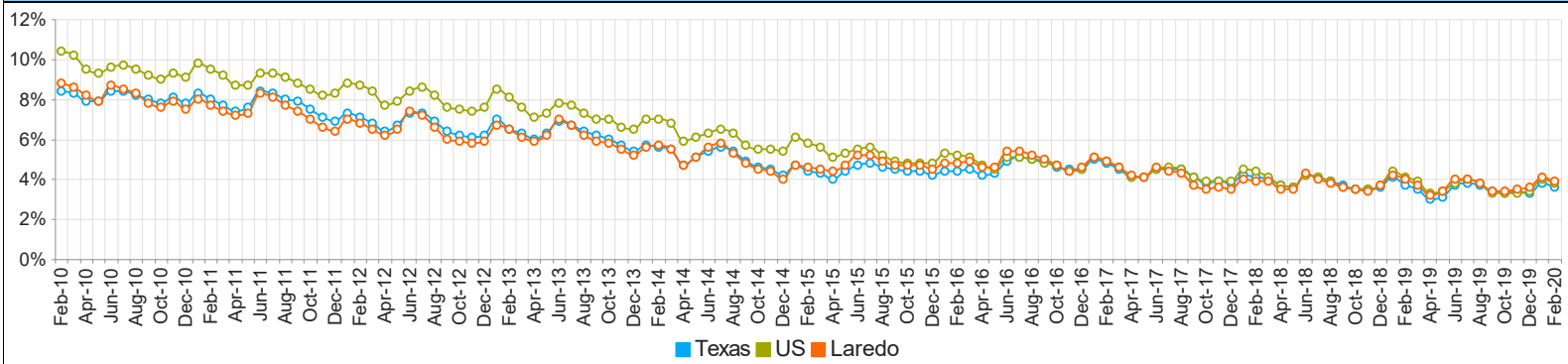


MSA Labor Force Statistics				
	Feb-20	Jan-20	Feb-19	Yearly Change
Civilian Labor Force	120,412	119,635	118,668	1,744
Employed	115,667	114,720	113,960	1,707
Unemployed	4,745	4,915	4,708	37
Unemployment Rate	3.9%	4.1%	4.0%	-0.1%

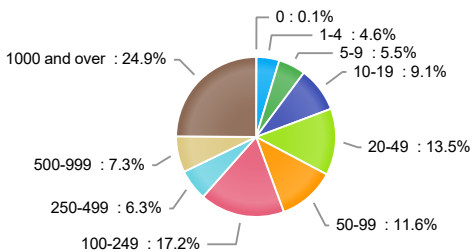
Texas Labor Force Statistics				
	Feb-20	Jan-20	Feb-19	Yearly Change
Civilian Labor Force	14,286,245	14,188,058	14,001,465	284,780
Employed	13,777,994	13,655,624	13,486,223	291,771
Unemployed	508,251	532,434	515,242	-6,991
Unemployment Rate	3.6%	3.8%	3.7%	-0.1%

US Labor Force Statistics				
	Feb-20	Jan-20	Feb-19	Yearly Change
Civilian Labor Force	164,235,000	163,497,000	162,793,000	1,442,000
Employed	158,017,000	156,994,000	156,167,000	1,850,000
Unemployed	6,218,000	6,504,000	6,625,000	-407,000
Unemployment Rate	3.8%	4.0%	4.1%	-0.3%

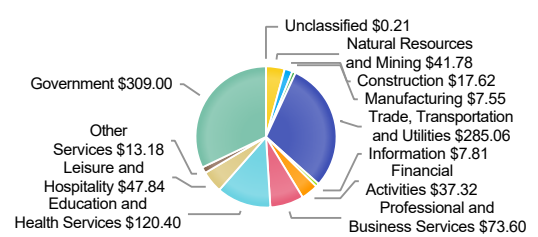
Historical Unemployment Rates



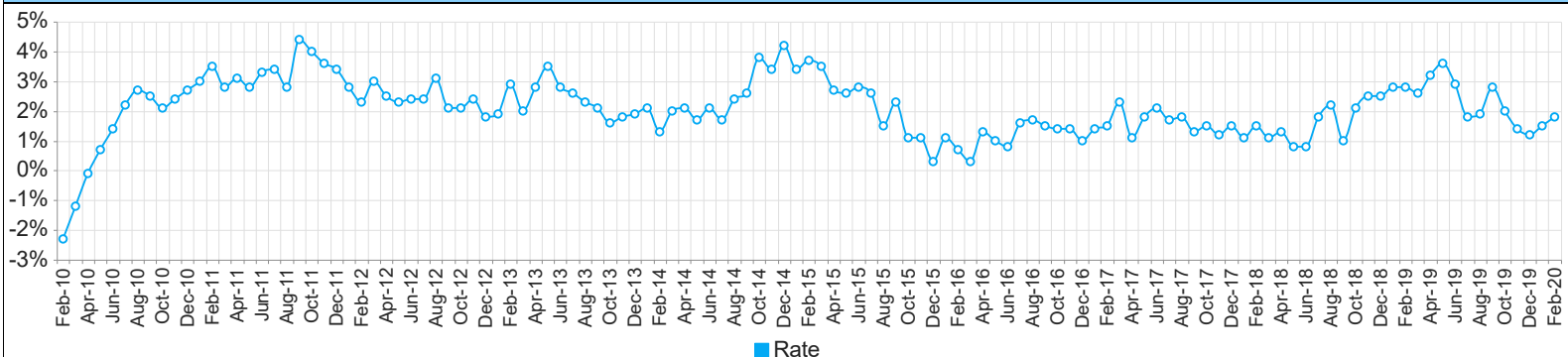
Employment by Size Class (3rd Quarter 2019)



Wages by Industry (in millions) (3rd Quarter 2019)



Annual Growth Rate Total Non-agricultural employment



Employment by Industry (February 2020)

Industry	Current Month Employment	% Monthly Change	% Yearly Change
Total Nonfarm	108,800	0.9%	1.8%
Mining, Logging and Construction	3,500	0.0%	-16.7%
Manufacturing	700	0.0%	0.0%
Trade, Transportation, and Utilities	33,100	-0.3%	3.1%
Information	800	0.0%	14.3%
Financial Activities	3,900	0.0%	2.6%
Professional and Business Services	10,700	0.9%	2.9%
Education and Health Services	17,500	1.2%	1.2%
Leisure and Hospitality	11,400	2.7%	0.0%
Other Services	2,400	0.0%	4.3%
Government	24,800	2.1%	3.3%

Employment by Industry (February 2020)

