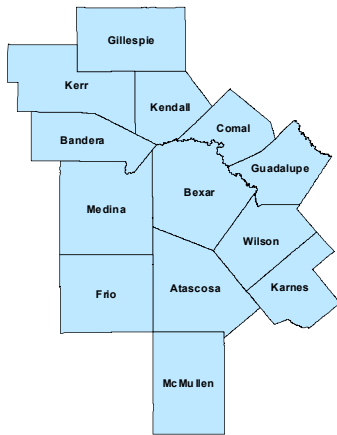
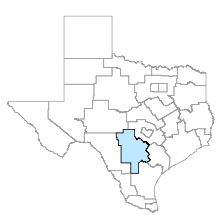


Alamo Workforce Development Area

February 2020



WDA Labor Force Statistics

	Feb-20	Jan-20	Feb-19	Yearly Change
Civilian Labor Force	1,280,248	1,275,133	1,251,483	28,765
Employed	1,240,679	1,234,196	1,210,950	29,729
Unemployed	39,569	40,937	40,533	-964
Unemployment Rate	3.1%	3.2%	3.2%	-0.1%

Texas Labor Force Statistics

	Feb-20	Jan-20	Feb-19	Yearly Change
Civilian Labor Force	14,286,245	14,188,058	14,001,465	284,780
Employed	13,777,994	13,655,624	13,486,223	291,771
Unemployed	508,251	532,434	515,242	-6,991
Unemployment Rate	3.6%	3.8%	3.7%	-0.1%

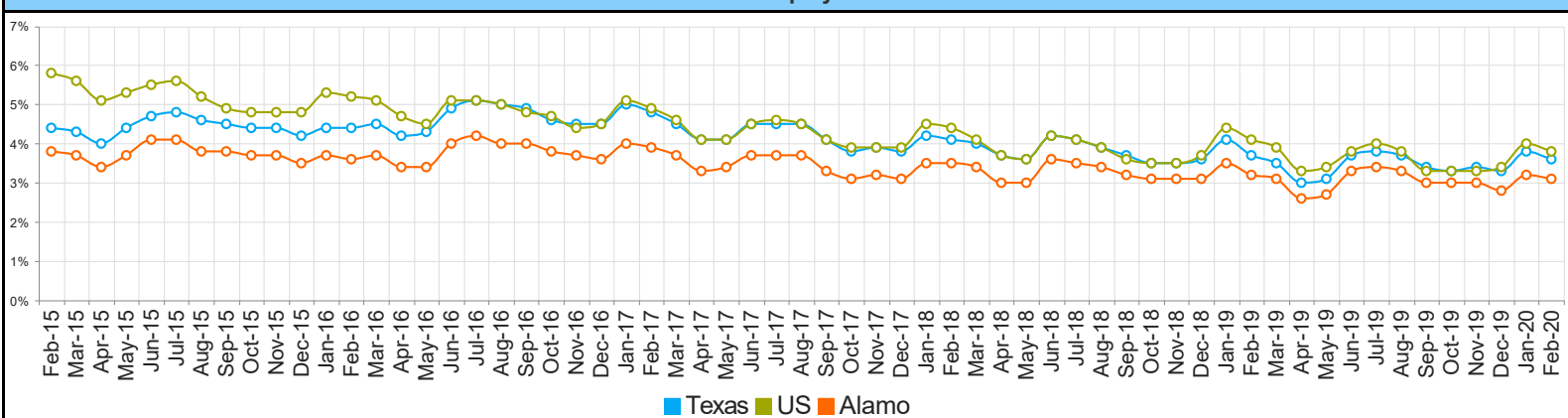
US Labor Force Statistics

	Feb-20	Jan-20	Feb-19	Yearly Change
Civilian Labor Force	164,235,000	163,497,000	162,793,000	1,442,000
Employed	158,017,000	156,994,000	156,167,000	1,850,000
Unemployed	6,218,000	6,504,000	6,625,000	-407,000
Unemployment Rate	3.8%	4.0%	4.1%	-0.3%

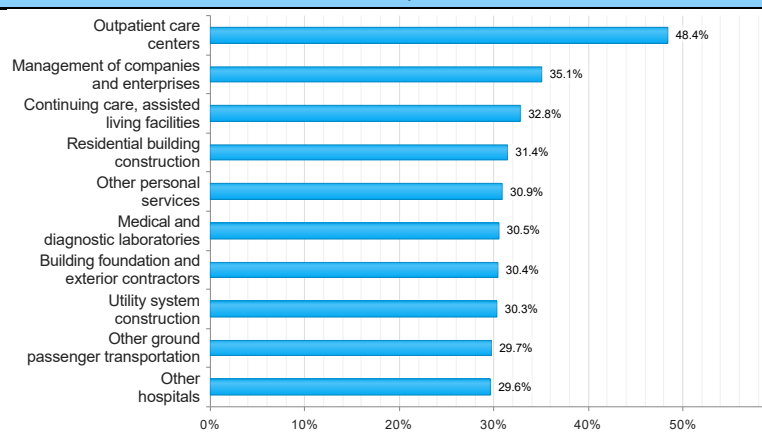
Continued Claims for the Week of the 12th

	Feb-20	Jan-20	Feb-19	Yearly Change
WDA	6,327	6,525	6,096	231
Texas	104,106	109,335	95,515	8,591

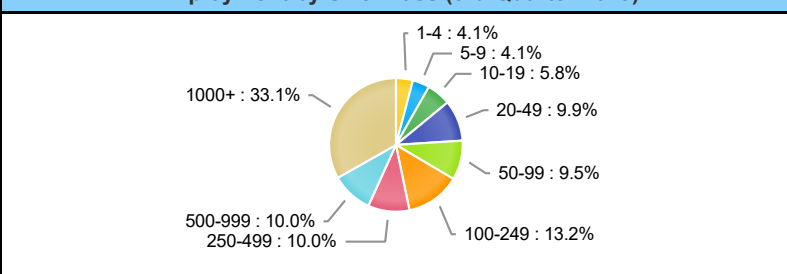
Historical Unemployment Rates



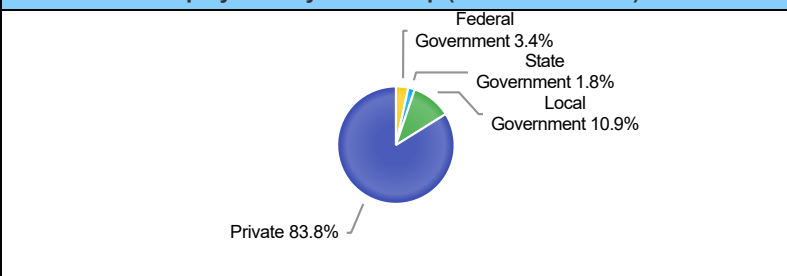
Projected Top Ten Fastest Growing Industries in WDA (% Growth 2016-2026)



Employment by Size Class (3rd Quarter 2019)



Employment by Ownership (3rd Quarter 2019)



Average Weekly Wage (3rd Quarter 2019)

	Q3 2019	Q2 2019	Q3 2018	Quarterly Change	Yearly Change
WDA	\$947	\$969	\$913	-\$22	\$34
Texas	\$1,109	\$1,101	\$1,065	\$8	\$44
US	\$1,093	\$1,095	\$1,055	-\$2	\$38

Employment by Industry (3rd Quarter 2019, Percent Change)

Industry	Employment	% of Total	% Quarterly Change	% Yearly Change
Natural Resources and Mining	16,163	1.5%	-1.1%	4.6%
Construction	60,564	5.6%	2.1%	6.4%
Manufacturing	52,944	4.9%	0.4%	1.2%
Trade, Transportation and Utilities	199,594	18.5%	0.8%	1.2%
Information	20,198	1.9%	-3.6%	-4.4%
Financial Activities	86,682	8.0%	0.6%	1.6%
Professional and Business Services	142,089	13.2%	0.8%	1.3%
Education and Health Services	274,656	25.4%	-1.3%	1.8%
Leisure and Hospitality	149,254	13.8%	0.4%	1.1%
Other Services	31,067	2.9%	0.7%	2.9%
Public Administration	46,205	4.3%	1.3%	1.6%

Employment by Industry (3rd Quarter 2019)

