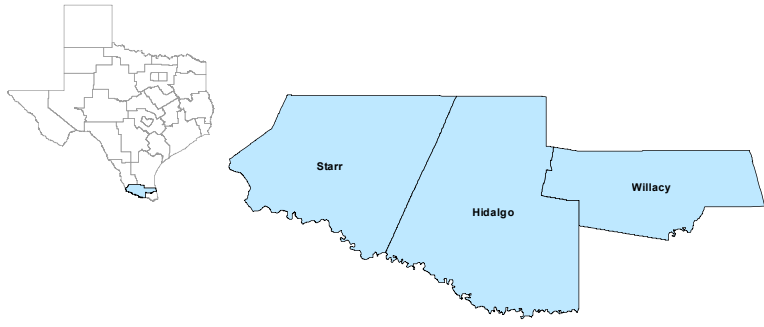


Lower Rio Grande Workforce Development Area

February 2020



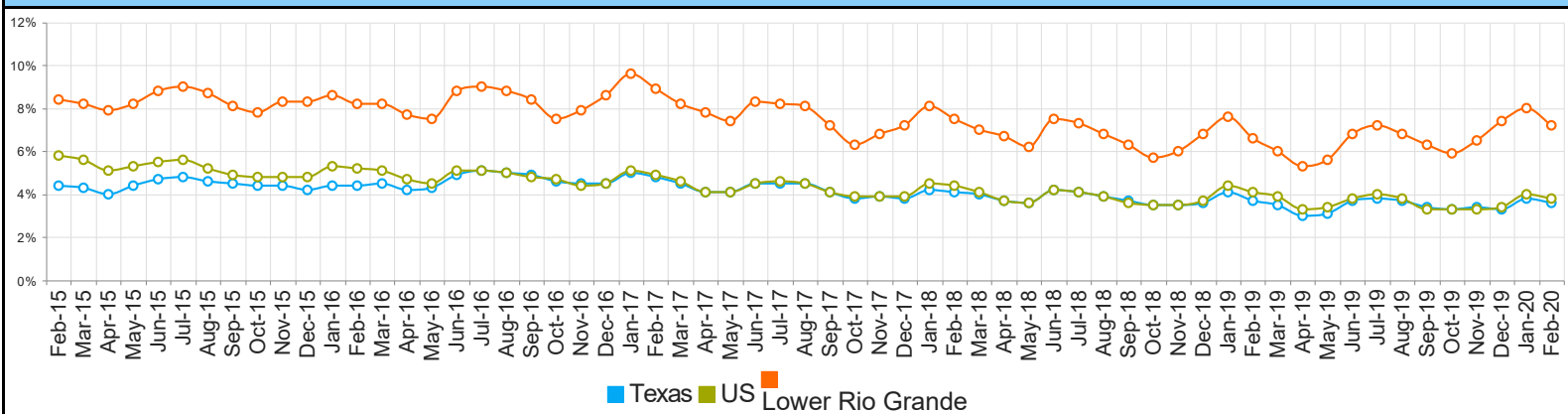
| WDA Labor Force Statistics | | | | |
|----------------------------|---------|---------|---------|---------------|
| | Feb-20 | Jan-20 | Feb-19 | Yearly Change |
| Civilian Labor Force | 395,949 | 396,661 | 385,374 | 10,575 |
| Employed | 367,626 | 364,851 | 359,841 | 7,785 |
| Unemployed | 28,323 | 31,810 | 25,533 | 2,790 |
| Unemployment Rate | 7.2% | 8.0% | 6.6% | 0.6% |

| Texas Labor Force Statistics | | | | |
|------------------------------|------------|------------|------------|---------------|
| | Feb-20 | Jan-20 | Feb-19 | Yearly Change |
| Civilian Labor Force | 14,286,245 | 14,188,058 | 14,001,465 | 284,780 |
| Employed | 13,777,994 | 13,655,624 | 13,486,223 | 291,771 |
| Unemployed | 508,251 | 532,434 | 515,242 | -6,991 |
| Unemployment Rate | 3.6% | 3.8% | 3.7% | -0.1% |

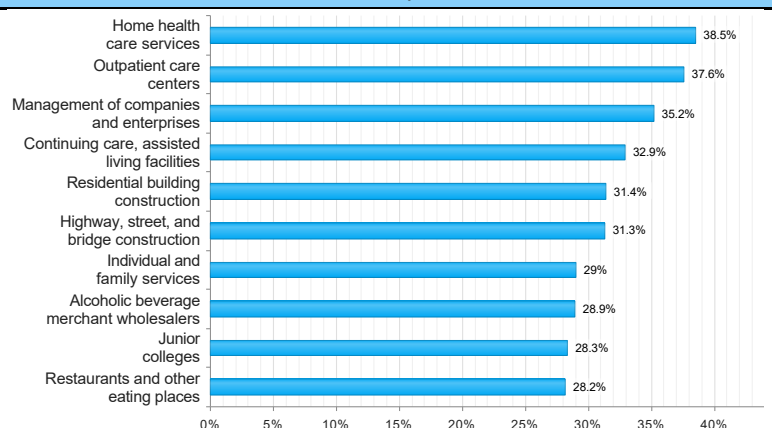
| US Labor Force Statistics | | | | |
|---------------------------|-------------|-------------|-------------|---------------|
| | Feb-20 | Jan-20 | Feb-19 | Yearly Change |
| Civilian Labor Force | 164,235,000 | 163,497,000 | 162,793,000 | 1,442,000 |
| Employed | 158,017,000 | 156,994,000 | 156,167,000 | 1,850,000 |
| Unemployed | 6,218,000 | 6,504,000 | 6,625,000 | -407,000 |
| Unemployment Rate | 3.8% | 4.0% | 4.1% | -0.3% |

| Continued Claims for the Week of the 12th | | | | |
|-------------------------------------------|---------|---------|--------|---------------|
| | Feb-20 | Jan-20 | Feb-19 | Yearly Change |
| WDA | 8,970 | 10,490 | 7,039 | 1,931 |
| Texas | 104,106 | 109,335 | 95,515 | 8,591 |

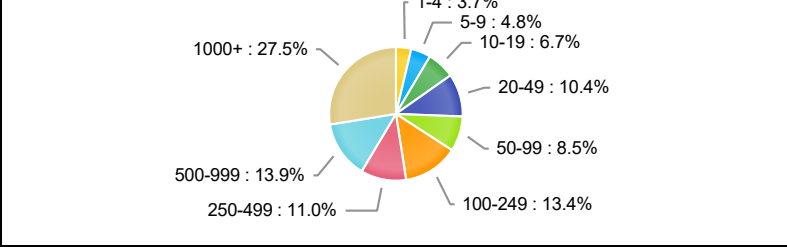
Historical Unemployment Rates



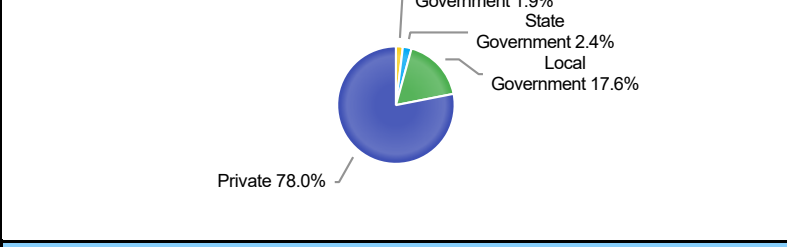
Projected Top Ten Fastest Growing Industries in WDA (% Growth 2016-2026)



Employment by Size Class (3rd Quarter 2019)



Employment by Ownership (3rd Quarter 2019)



Average Weekly Wage (3rd Quarter 2019)

| | Q3 2019 | Q2 2019 | Q3 2018 | Quarterly Change | Yearly Change |
|-------|---------|---------|---------|------------------|---------------|
| WDA | \$680 | \$654 | \$657 | \$26 | \$23 |
| Texas | \$1,109 | \$1,101 | \$1,065 | \$8 | \$44 |
| US | \$1,093 | \$1,095 | \$1,055 | -\$2 | \$38 |

Employment by Industry (3rd Quarter 2019, Percent Change)

| Industry | Employment | % of Total | % Quarterly Change | % Yearly Change |
|-------------------------------------|------------|------------|--------------------|-----------------|
| Natural Resources and Mining | 4,258 | 1.5% | -15.0% | -1.0% |
| Construction | 8,238 | 2.9% | 2.0% | 3.7% |
| Manufacturing | 6,876 | 2.4% | -0.1% | 0.3% |
| Trade, Transportation and Utilities | 56,962 | 20.2% | -0.5% | 0.6% |
| Information | 3,270 | 1.2% | -2.1% | 1.2% |
| Financial Activities | 9,156 | 3.3% | 0.4% | -3.3% |
| Professional and Business Services | 17,948 | 6.4% | -0.3% | 2.3% |
| Education and Health Services | 125,587 | 44.6% | -1.8% | 2.9% |
| Leisure and Hospitality | 29,294 | 10.4% | -1.2% | 5.9% |
| Other Services | 4,573 | 1.6% | 2.3% | 2.5% |
| Public Administration | 15,343 | 5.5% | -1.5% | -1.9% |

Employment by Industry (3rd Quarter 2019)

