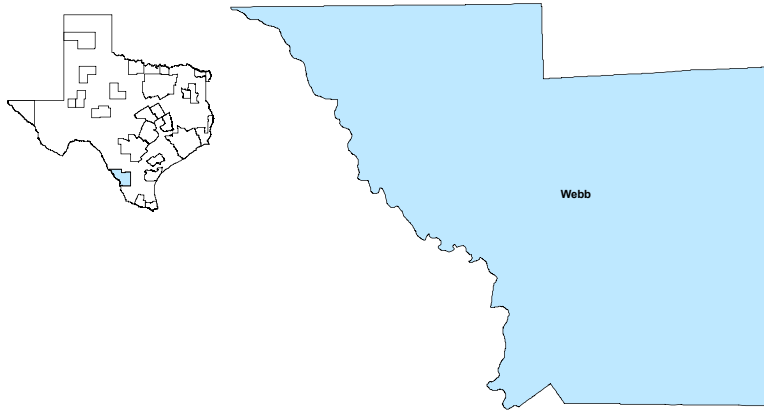


Laredo MSA

July 2019

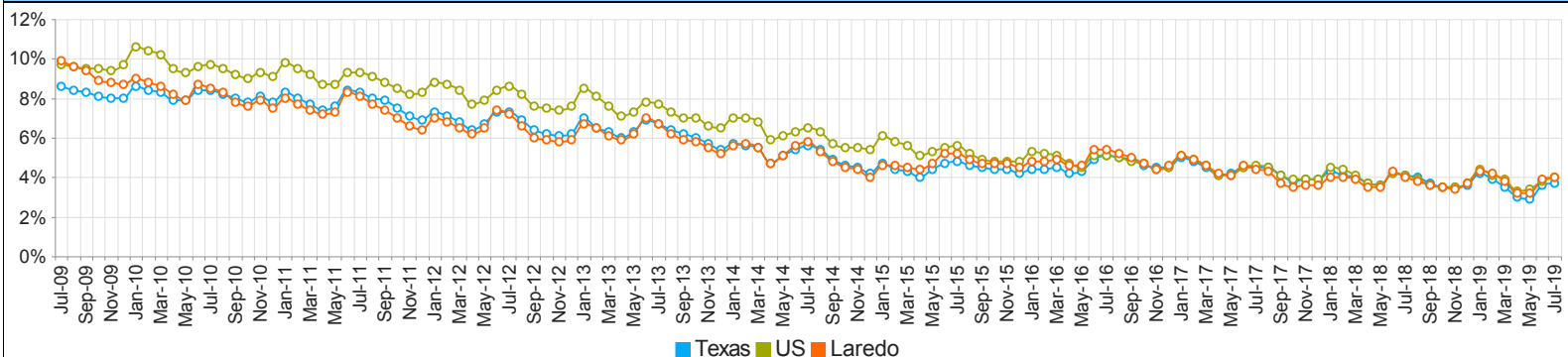


MSA Labor Force Statistics				
	Jul-19	Jun-19	Jul-18	Yearly Change
Civilian Labor Force	117,563	117,878	117,471	92
Employed	112,894	113,304	112,763	131
Unemployed	4,669	4,574	4,708	-39
Unemployment Rate	4.0%	3.9%	4.0%	0.0%

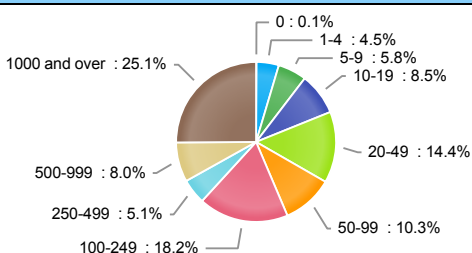
Texas Labor Force Statistics				
	Jul-19	Jun-19	Jul-18	Yearly Change
Civilian Labor Force	14,066,138	14,041,604	13,887,986	178,152
Employed	13,542,200	13,540,702	13,320,601	221,599
Unemployed	523,938	500,902	567,385	-43,447
Unemployment Rate	3.7%	3.6%	4.1%	-0.4%

US Labor Force Statistics				
	Jul-19	Jun-19	Jul-18	Yearly Change
Civilian Labor Force	164,941,000	164,120,000	163,734,000	1,207,000
Employed	158,385,000	157,828,000	157,004,000	1,381,000
Unemployed	6,556,000	6,292,000	6,730,000	-174,000
Unemployment Rate	4.0%	3.8%	4.1%	-0.1%

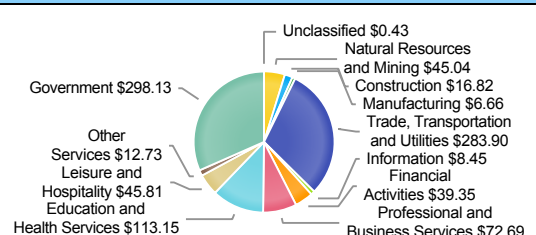
Historical Unemployment Rates



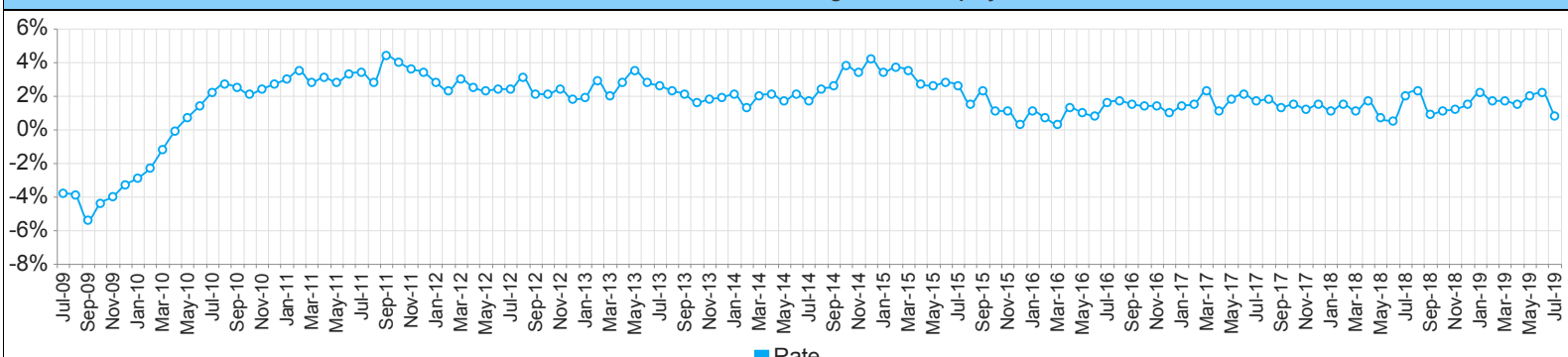
Employment by Size Class (1st Quarter 2019)



Wages by Industry (in millions) (1st Quarter 2019)



Annual Growth Rate Total Non-agricultural employment



Employment by Industry (July 2019)

Industry	Current Month Employment	% Monthly Change	% Yearly Change
Total Nonfarm	106,200	-0.8%	0.8%
Mining, Logging and Construction	4,600	7.0%	15.0%
Manufacturing	600	0.0%	-14.3%
Trade, Transportation, and Utilities	31,600	-0.3%	0.3%
Information	800	0.0%	0.0%
Financial Activities	3,800	0.0%	0.0%
Professional and Business Services	10,800	0.0%	5.9%
Education and Health Services	17,200	-0.6%	1.2%
Leisure and Hospitality	11,600	-2.5%	1.8%
Other Services	2,400	0.0%	0.0%
Government	22,800	-3.0%	-3.4%

Employment by Industry (July 2019)

