

## Lower Rio Grande Workforce Development Area

July 2019



| WDA Labor Force Statistics |         |         |         |               |
|----------------------------|---------|---------|---------|---------------|
|                            | Jul-19  | Jun-19  | Jul-18  | Yearly Change |
| Civilian Labor Force       | 379,293 | 382,484 | 375,149 | 4,144         |
| Employed                   | 352,734 | 357,451 | 347,627 | 5,107         |
| Unemployed                 | 26,559  | 25,033  | 27,522  | -963          |
| Unemployment Rate          | 7.0%    | 6.5%    | 7.3%    | -0.3%         |

| Texas Labor Force Statistics |            |            |            |               |
|------------------------------|------------|------------|------------|---------------|
|                              | Jul-19     | Jun-19     | Jul-18     | Yearly Change |
| Civilian Labor Force         | 14,066,138 | 14,041,604 | 13,887,986 | 178,152       |
| Employed                     | 13,542,200 | 13,540,702 | 13,320,601 | 221,599       |
| Unemployed                   | 523,938    | 500,902    | 567,385    | -43,447       |
| Unemployment Rate            | 3.7%       | 3.6%       | 4.1%       | -0.4%         |

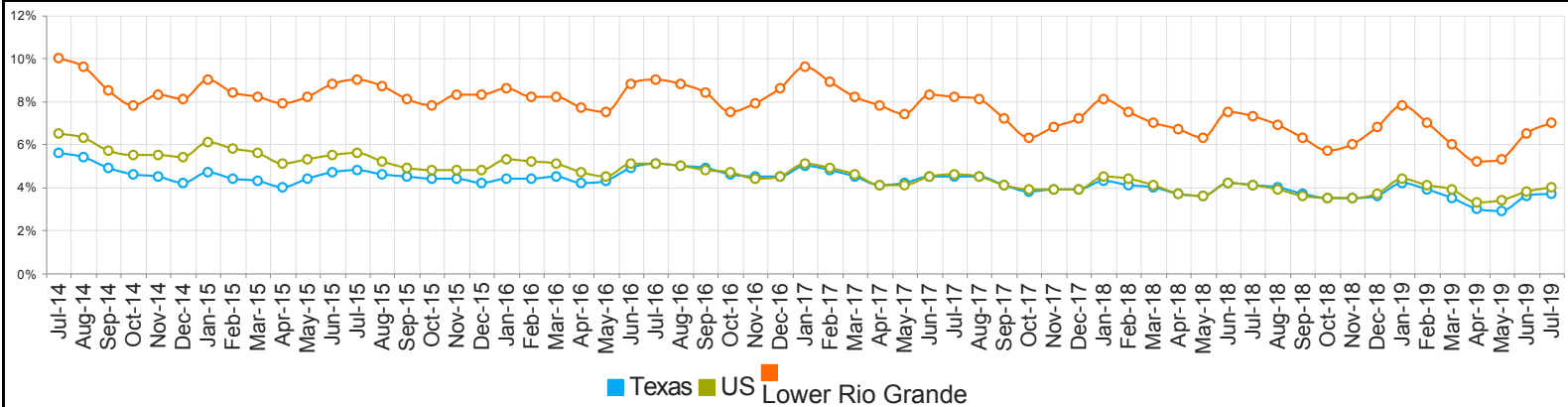
  

| US Labor Force Statistics |             |             |             |               |
|---------------------------|-------------|-------------|-------------|---------------|
|                           | Jul-19      | Jun-19      | Jul-18      | Yearly Change |
| Civilian Labor Force      | 164,941,000 | 164,120,000 | 163,734,000 | 1,207,000     |
| Employed                  | 158,385,000 | 157,828,000 | 157,004,000 | 1,381,000     |
| Unemployed                | 6,556,000   | 6,292,000   | 6,730,000   | -174,000      |
| Unemployment Rate         | 4.0%        | 3.8%        | 4.1%        | -0.1%         |

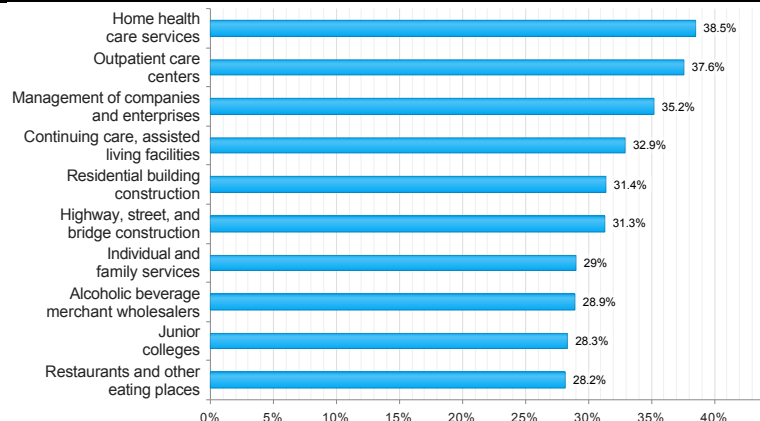
  

| Continued Claims for the Week of the 12th |         |         |         |               |
|---|---------|---------|---------|---------------|
|   | Jul-19  | Jun-19  | Jul-18  | Yearly Change |
| WDA                                       | 7,743   | 7,390   | 6,360   | 1,383         |
| Texas                                     | 103,612 | 101,617 | 103,675 | -63           |

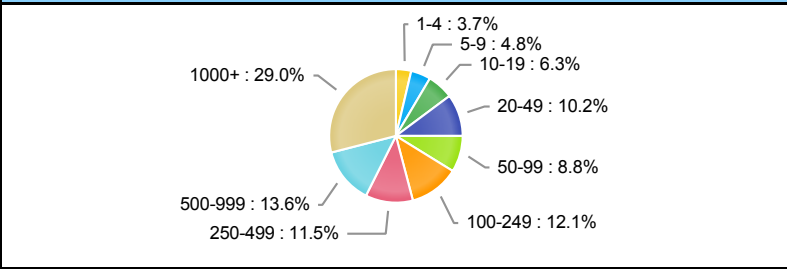
## Historical Unemployment Rates



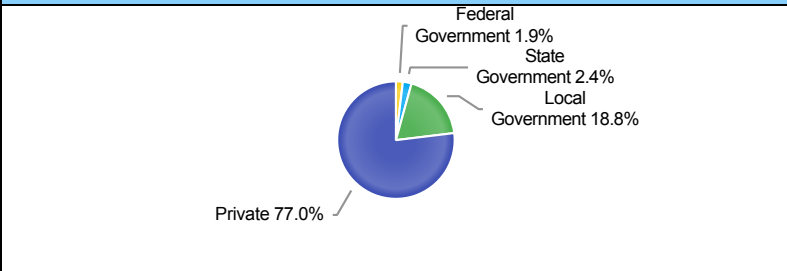
## Projected Top Ten Fastest Growing Industries in WDA (% Growth 2016-2026)



## Employment by Size Class (1st Quarter 2019)



## Employment by Ownership (1st Quarter 2019)



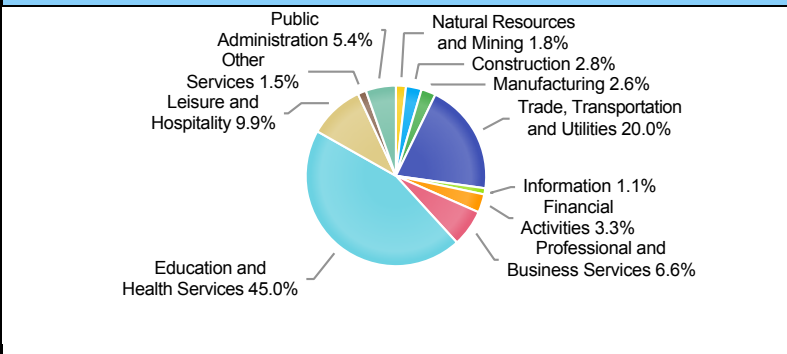
## Average Weekly Wage (1st Quarter 2019)

|       | Q1 2019 | Q4 2018 | Q1 2018 | Quarterly Change | Yearly Change |
|-------|---------|---------|---------|------------------|---------------|
| WDA   | \$658   | \$679   | \$651   | -\$21            | \$7           |
| Texas | \$1,204 | \$1,148 | \$1,168 | \$56             | \$36          |
| US    | N/A     | \$1,144 | \$1,152 | N/A              | N/A           |

## Employment by Industry (1st Quarter 2019, Percent Change)

| Industry                            | Employment | % of Total | % Quarterly Change | % Yearly Change |
|-------------------------------------|------------|------------|--------------------|-----------------|
| Natural Resources and Mining        | 5,129      | 1.8%       | 9.5%               | -0.2%           |
| Construction                        | 7,870      | 2.8%       | 1.1%               | -1.1%           |
| Manufacturing                       | 7,223      | 2.6%       | 0.5%               | 0.0%            |
| Trade, Transportation and Utilities | 56,607     | 20.0%      | -2.7%              | -0.4%           |
| Information                         | 3,151      | 1.1%       | -0.2%              | -2.3%           |
| Financial Activities                | 9,310      | 3.3%       | -1.9%              | 0.4%            |
| Professional and Business Services  | 18,584     | 6.6%       | 0.9%               | 1.1%            |
| Education and Health Services       | 127,567    | 45.0%      | 0.4%               | 3.2%            |
| Leisure and Hospitality             | 28,022     | 9.9%       | 1.5%               | 3.2%            |
| Other Services                      | 4,346      | 1.5%       | -1.3%              | 0.6%            |
| Public Administration               | 15,369     | 5.4%       | -0.7%              | -0.2%           |

## Employment by Industry (1st Quarter 2019)



\*The average weekly wage for U.S. for the latest quarter is not available. It will be updated shortly.