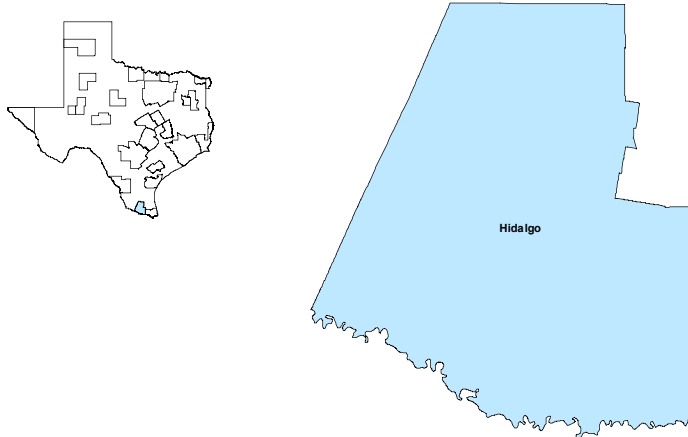


McAllen-Edinburg-Mission MSA

July 2019

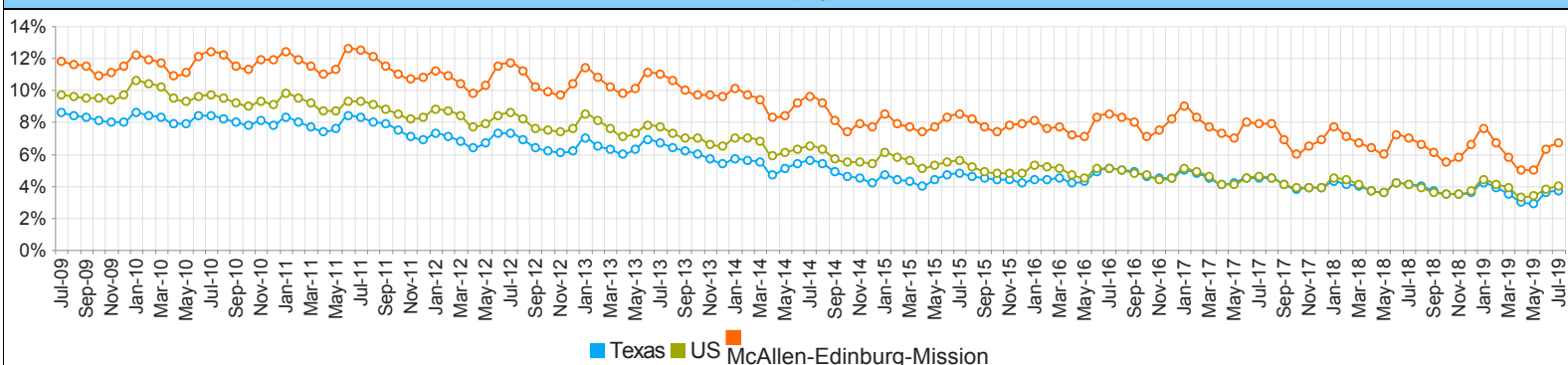


MSA Labor Force Statistics				
	Jul-19	Jun-19	Jul-18	Yearly Change
Civilian Labor Force	349,003	351,690	344,298	4,705
Employed	325,663	329,620	320,103	5,560
Unemployed	23,340	22,070	24,195	-855
Unemployment Rate	6.7%	6.3%	7.0%	-0.3%

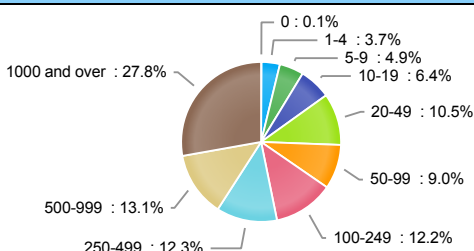
Texas Labor Force Statistics				
	Jul-19	Jun-19	Jul-18	Yearly Change
Civilian Labor Force	14,066,138	14,041,604	13,887,986	178,152
Employed	13,542,200	13,540,702	13,320,601	221,599
Unemployed	523,938	500,902	567,385	-43,447
Unemployment Rate	3.7%	3.6%	4.1%	-0.4%

US Labor Force Statistics				
	Jul-19	Jun-19	Jul-18	Yearly Change
Civilian Labor Force	164,941,000	164,120,000	163,734,000	1,207,000
Employed	158,385,000	157,828,000	157,004,000	1,381,000
Unemployed	6,556,000	6,292,000	6,730,000	-174,000
Unemployment Rate	4.0%	3.8%	4.1%	-0.1%

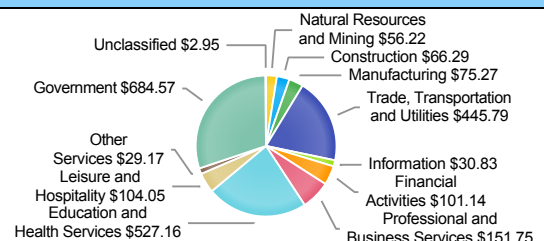
Historical Unemployment Rates



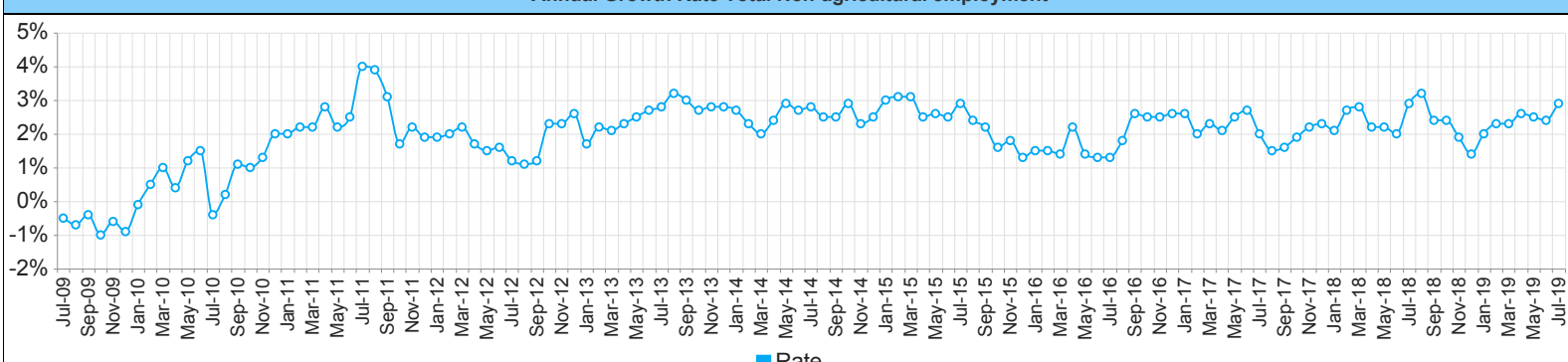
Employment by Size Class (1st Quarter 2019)



Wages by Industry (in millions) (1st Quarter 2019)



Annual Growth Rate Total Non-agricultural employment



Employment by Industry (July 2019)

Industry	Current Month Employment	% Monthly Change	% Yearly Change
Total Nonfarm	265,900	-1.8%	2.9%
Mining, Logging and Construction	7,900	-1.2%	-6.0%
Manufacturing	6,900	-1.4%	1.5%
Trade, Transportation, and Utilities	54,300	0.2%	2.5%
Information	3,000	3.4%	0.0%
Financial Activities	9,000	0.0%	-2.2%
Professional and Business Services	17,100	0.0%	0.0%
Education and Health Services	79,500	1.4%	5.9%
Leisure and Hospitality	26,200	0.0%	4.0%
Other Services	6,000	0.0%	5.3%
Government	56,000	-9.5%	2.0%

Employment by Industry (July 2019)

