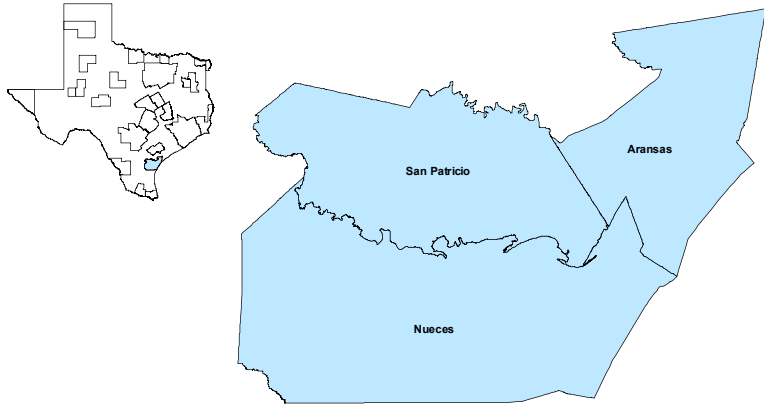


Corpus Christi MSA

November 2019



MSA Labor Force Statistics

	Nov-19	Oct-19	Nov-18	Yearly Change
Civilian Labor Force	210,576	209,883	209,039	1,537
Employed	202,059	201,653	200,102	1,957
Unemployed	8,517	8,230	8,937	-420
Unemployment Rate	4.0%	3.9%	4.3%	-0.3%

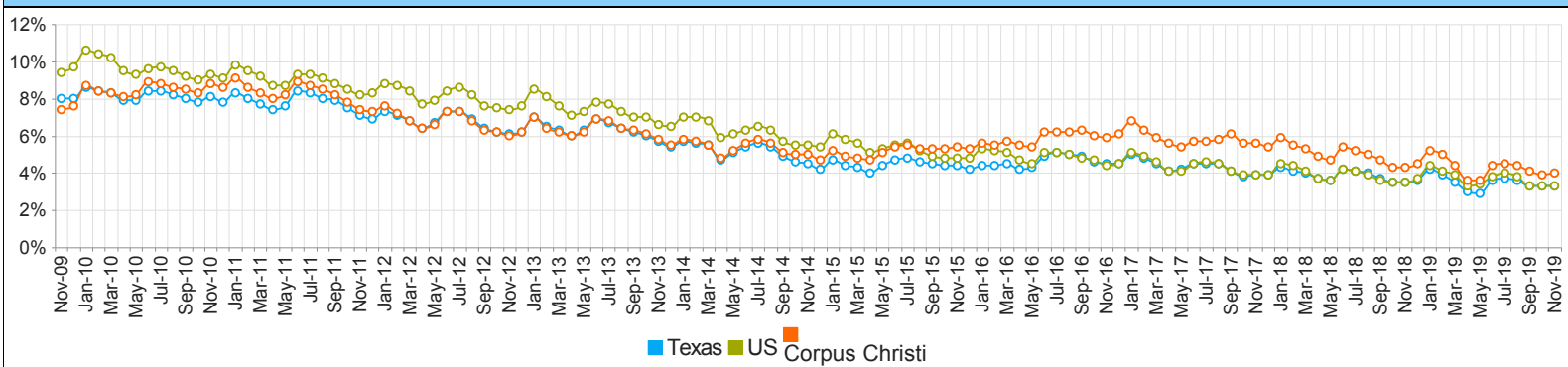
Texas Labor Force Statistics

	Nov-19	Oct-19	Nov-18	Yearly Change
Civilian Labor Force	14,265,562	14,190,783	13,961,940	303,622
Employed	13,788,541	13,723,103	13,475,980	312,561
Unemployed	477,021	467,680	485,960	-8,939
Unemployment Rate	3.3%	3.3%	3.5%	-0.2%

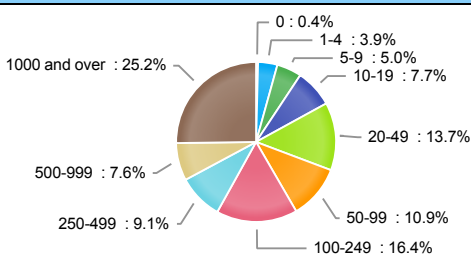
US Labor Force Statistics

	Nov-19	Oct-19	Nov-18	Yearly Change
Civilian Labor Force	164,386,000	164,576,000	162,665,000	1,721,000
Employed	158,945,000	159,067,000	157,015,000	1,930,000
Unemployed	5,441,000	5,510,000	5,650,000	-209,000
Unemployment Rate	3.3%	3.3%	3.5%	-0.2%

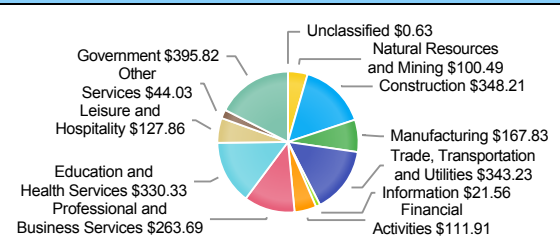
Historical Unemployment Rates



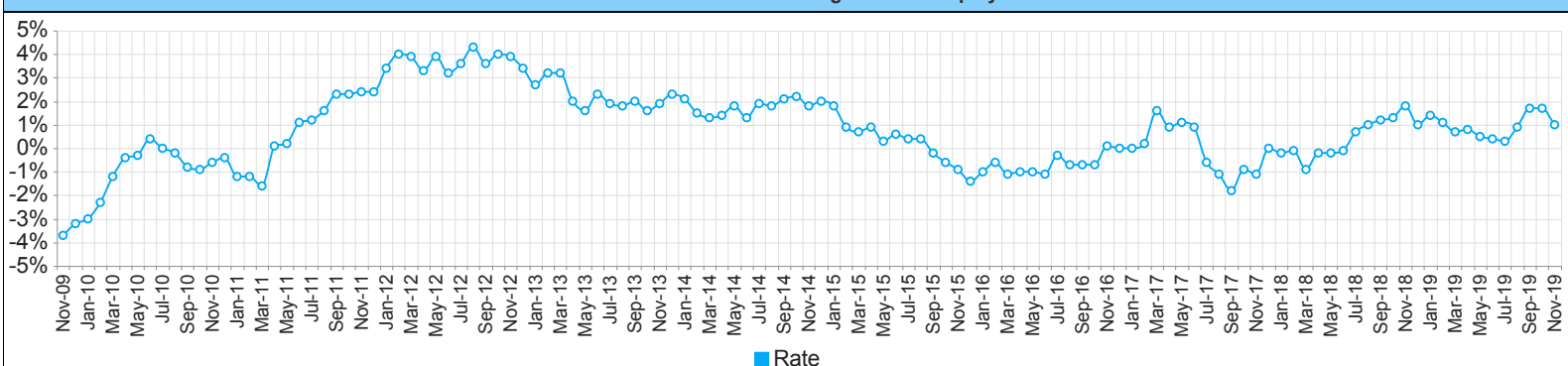
Employment by Size Class (2nd Quarter 2019)



Wages by Industry (in millions) (2nd Quarter 2019)



Annual Growth Rate Total Non-agricultural employment



Employment by Industry (November 2019)

Industry	Current Month Employment	% Monthly Change	% Yearly Change
Total Nonfarm	197,700	0.3%	1.0%
Mining, Logging and Construction	25,300	-0.4%	2.4%
Manufacturing	8,600	0.0%	1.2%
Trade, Transportation, and Utilities	33,400	0.9%	-1.5%
Information	1,600	0.0%	-5.9%
Financial Activities	8,600	0.0%	3.6%
Professional and Business Services	19,600	0.5%	-0.5%
Education and Health Services	33,100	0.6%	2.5%
Leisure and Hospitality	25,600	-0.8%	2.4%
Other Services	6,500	0.0%	3.2%
Government	35,400	0.9%	0.3%

Employment by Industry (November 2019)

