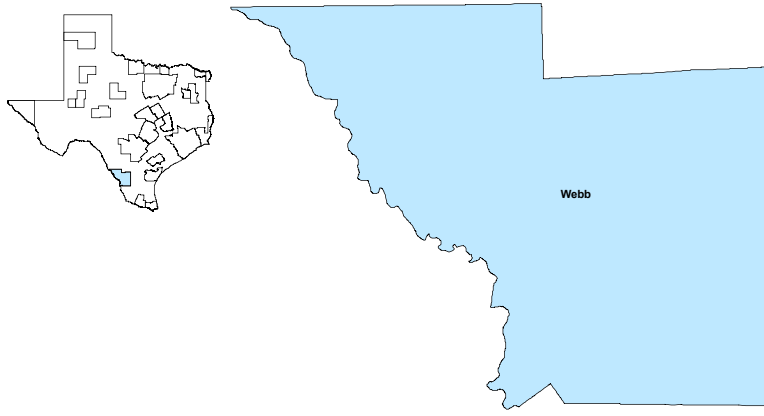


## Laredo MSA

## November 2019



MSA Labor Force Statistics				
	Nov-19	Oct-19	Nov-18	Yearly Change
Civilian Labor Force	118,898	118,108	117,309	1,589
Employed	114,707	114,065	113,262	1,445
Unemployed	4,191	4,043	4,047	144
Unemployment Rate	3.5%	3.4%	3.4%	0.1%

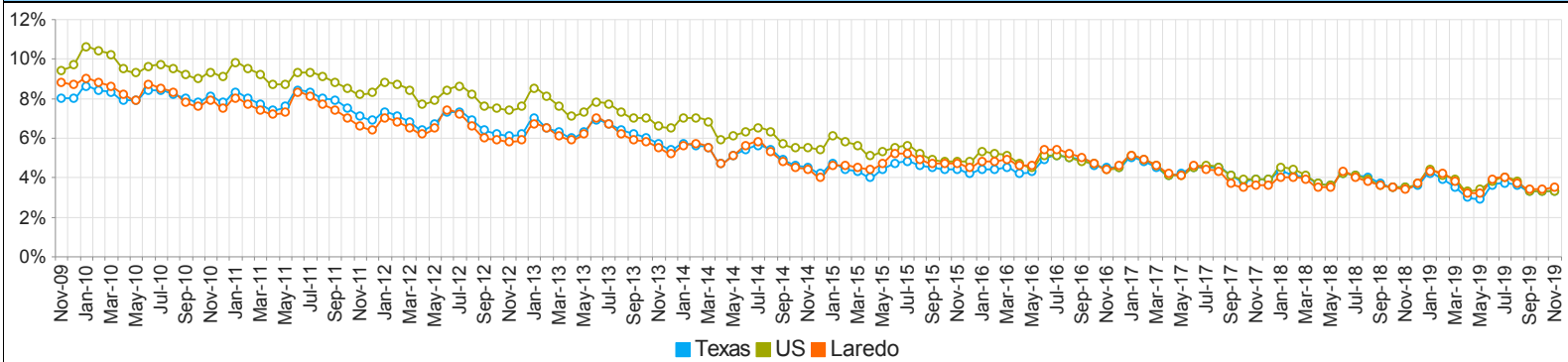
  

Texas Labor Force Statistics				
	Nov-19	Oct-19	Nov-18	Yearly Change
Civilian Labor Force	14,265,562	14,190,783	13,961,940	303,622
Employed	13,788,541	13,723,103	13,475,980	312,561
Unemployed	477,021	467,680	485,960	-8,939
Unemployment Rate	3.3%	3.3%	3.5%	-0.2%

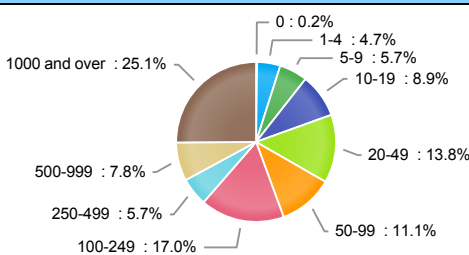
  

US Labor Force Statistics				
	Nov-19	Oct-19	Nov-18	Yearly Change
Civilian Labor Force	164,386,000	164,576,000	162,665,000	1,721,000
Employed	158,945,000	159,067,000	157,015,000	1,930,000
Unemployed	5,441,000	5,510,000	5,650,000	-209,000
Unemployment Rate	3.3%	3.3%	3.5%	-0.2%

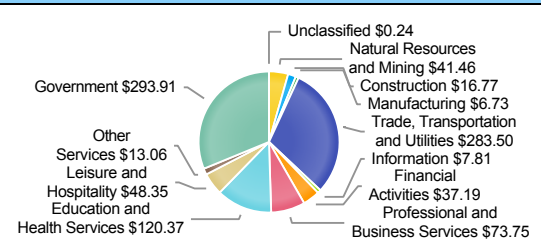
### Historical Unemployment Rates



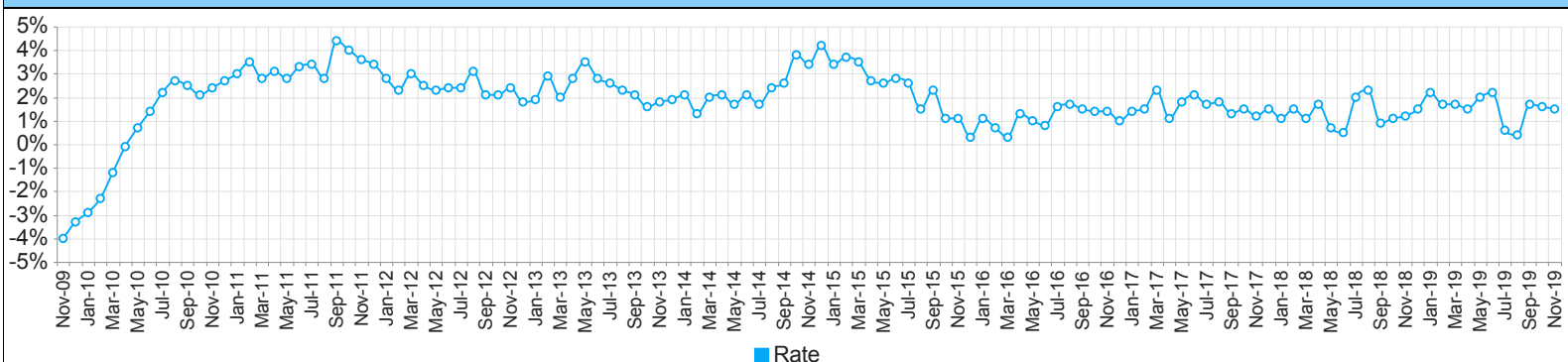
### Employment by Size Class (2nd Quarter 2019)



### Wages by Industry (in millions) (2nd Quarter 2019)



### Annual Growth Rate Total Non-agricultural employment



### Employment by Industry (November 2019)

Industry	Current Month Employment	% Monthly Change	% Yearly Change
Total Nonfarm	107,800	0.7%	1.5%
Mining, Logging and Construction	4,200	-2.3%	2.4%
Manufacturing	600	0.0%	0.0%
Trade, Transportation, and Utilities	32,700	2.2%	1.6%
Information	800	0.0%	14.3%
Financial Activities	3,800	0.0%	0.0%
Professional and Business Services	10,800	0.0%	2.9%
Education and Health Services	17,300	0.0%	1.8%
Leisure and Hospitality	11,700	0.9%	3.5%
Other Services	2,400	0.0%	0.0%
Government	23,500	0.0%	-0.4%

### Employment by Industry (November 2019)

