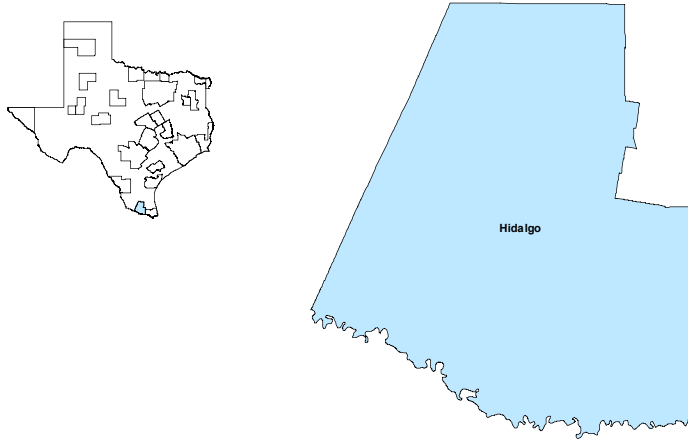


McAllen-Edinburg-Mission MSA

November 2019

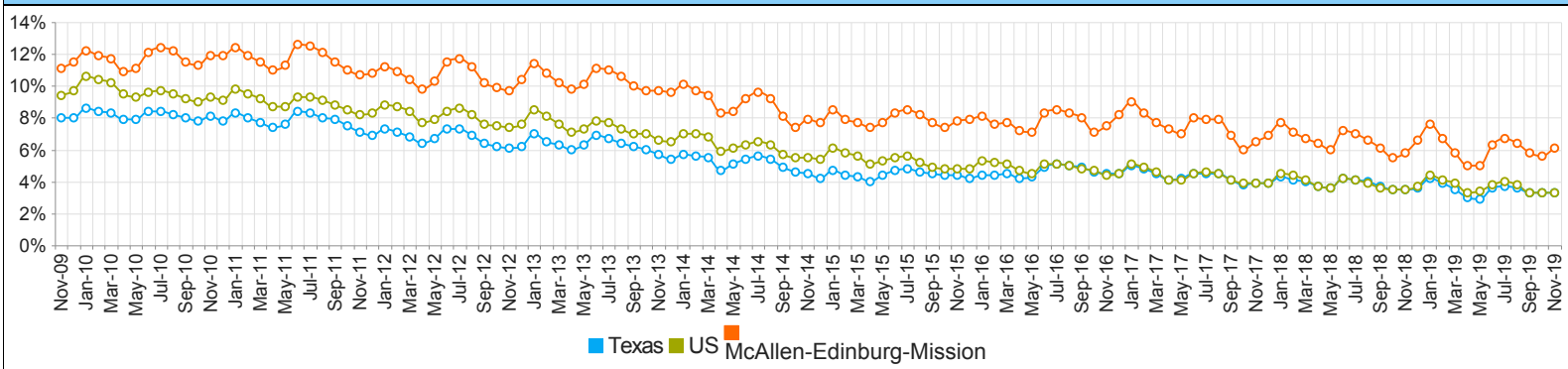


MSA Labor Force Statistics				
	Nov-19	Oct-19	Nov-18	Yearly Change
Civilian Labor Force	358,376	355,574	348,987	9,389
Employed	336,471	335,796	328,728	7,743
Unemployed	21,905	19,778	20,259	1,646
Unemployment Rate	6.1%	5.6%	5.8%	0.3%

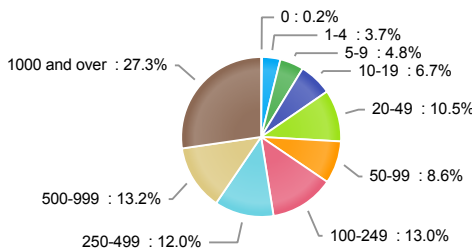
Texas Labor Force Statistics				
	Nov-19	Oct-19	Nov-18	Yearly Change
Civilian Labor Force	14,265,562	14,190,783	13,961,940	303,622
Employed	13,788,541	13,723,103	13,475,980	312,561
Unemployed	477,021	467,680	485,960	-8,939
Unemployment Rate	3.3%	3.3%	3.5%	-0.2%

US Labor Force Statistics				
	Nov-19	Oct-19	Nov-18	Yearly Change
Civilian Labor Force	164,386,000	164,576,000	162,665,000	1,721,000
Employed	158,945,000	159,067,000	157,015,000	1,930,000
Unemployed	5,441,000	5,510,000	5,650,000	-209,000
Unemployment Rate	3.3%	3.3%	3.5%	-0.2%

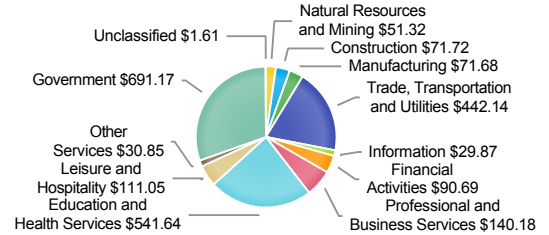
Historical Unemployment Rates



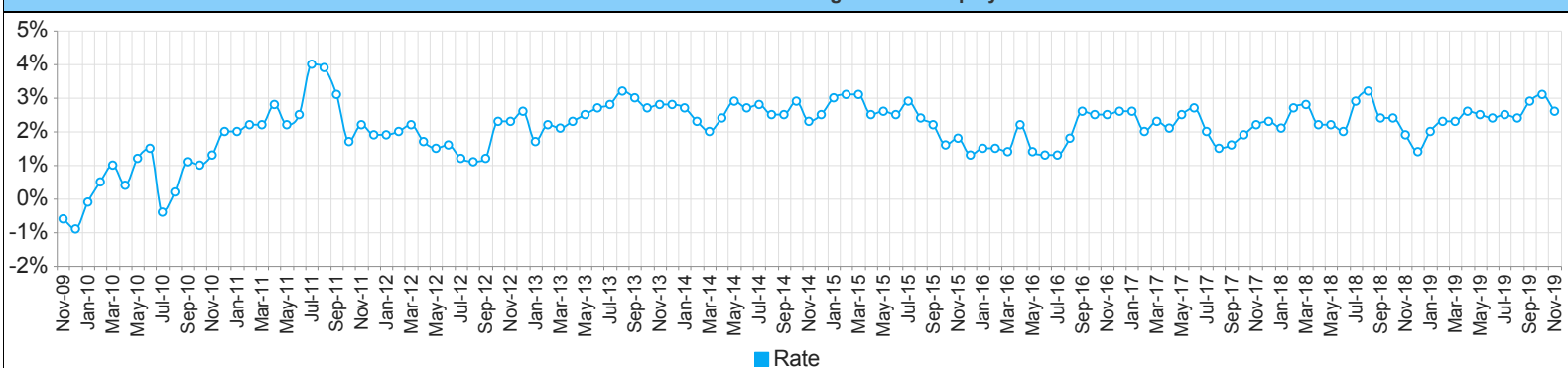
Employment by Size Class (2nd Quarter 2019)



Wages by Industry (in millions) (2nd Quarter 2019)



Annual Growth Rate Total Non-agricultural employment



Employment by Industry (November 2019)

Industry	Current Month Employment	% Monthly Change	% Yearly Change
Total Nonfarm	275,400	0.3%	2.6%
Mining, Logging and Construction	7,700	-1.3%	-8.3%
Manufacturing	6,900	1.5%	-4.2%
Trade, Transportation, and Utilities	56,600	1.8%	2.2%
Information	2,900	0.0%	0.0%
Financial Activities	9,000	0.0%	0.0%
Professional and Business Services	17,400	-0.6%	1.2%
Education and Health Services	80,700	-0.9%	6.3%
Leisure and Hospitality	25,600	-0.4%	2.0%
Other Services	6,100	0.0%	5.2%
Government	62,500	1.1%	1.5%

Employment by Industry (November 2019)

