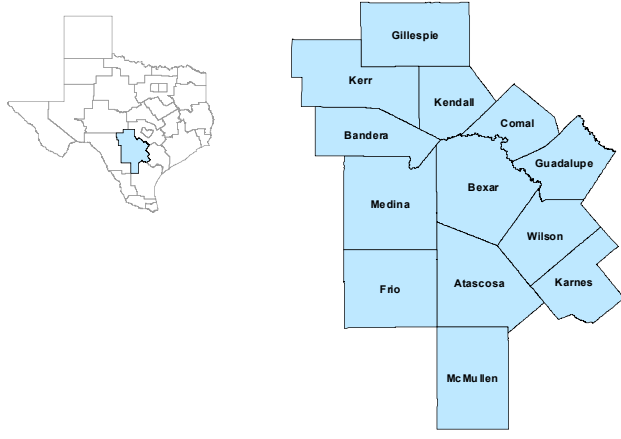


Alamo Workforce Development Area

November 2019



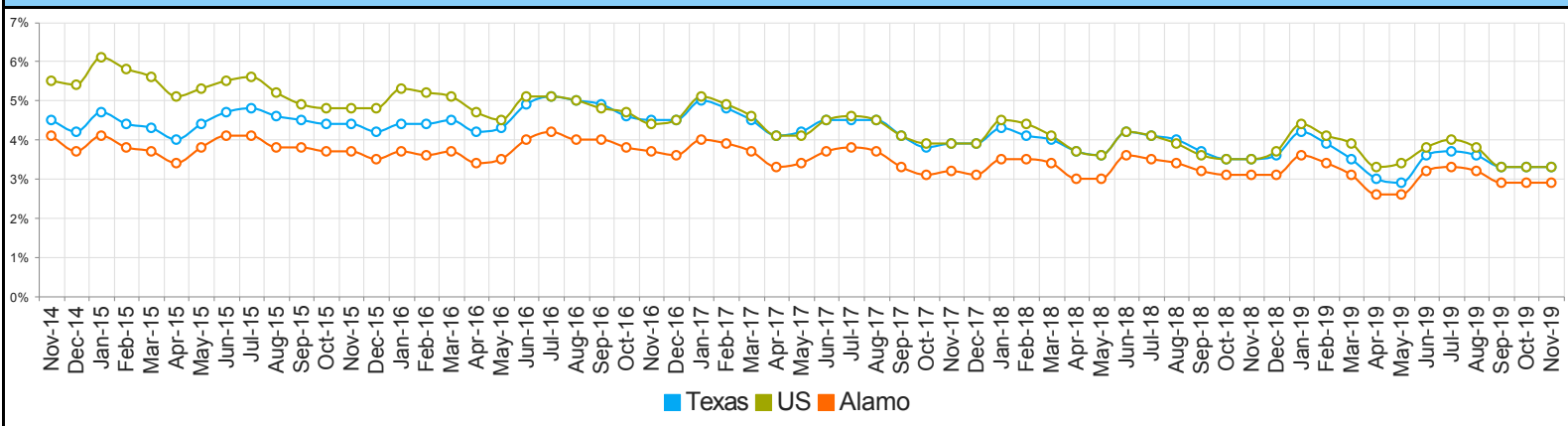
WDA Labor Force Statistics				
	Nov-19	Oct-19	Nov-18	Yearly Change
Civilian Labor Force	1,285,091	1,280,746	1,250,460	34,631
Employed	1,247,716	1,243,695	1,212,213	35,503
Unemployed	37,375	37,051	38,247	-872
Unemployment Rate	2.9%	2.9%	3.1%	-0.2%

Texas Labor Force Statistics				
	Nov-19	Oct-19	Nov-18	Yearly Change
Civilian Labor Force	14,265,562	14,190,783	13,961,940	303,622
Employed	13,788,541	13,723,103	13,475,980	312,561
Unemployed	477,021	467,680	485,960	-8,939
Unemployment Rate	3.3%	3.3%	3.5%	-0.2%

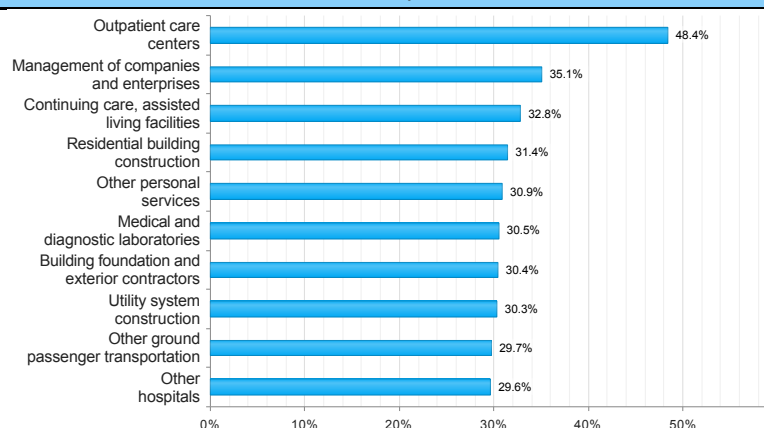
US Labor Force Statistics				
	Nov-19	Oct-19	Nov-18	Yearly Change
Civilian Labor Force	164,386,000	164,576,000	162,665,000	1,721,000
Employed	158,945,000	159,067,000	157,015,000	1,930,000
Unemployed	5,441,000	5,510,000	5,650,000	-209,000
Unemployment Rate	3.3%	3.3%	3.5%	-0.2%

Continued Claims for the Week of the 12th				
	Nov-19	Oct-19	Nov-18	Yearly Change
WDA	6,098	6,012	5,486	612
Texas	93,207	89,985	83,685	9,522

Historical Unemployment Rates



Projected Top Ten Fastest Growing Industries in WDA (% Growth 2016-2026)



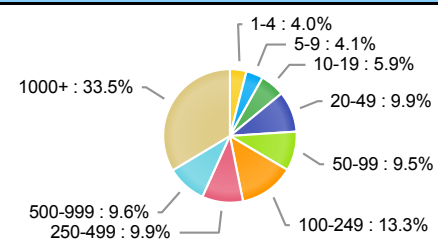
Average Weekly Wage (2nd Quarter 2019)

	Q2 2019	Q1 2019	Q2 2018	Quarterly Change	Yearly Change
WDA	\$967	\$1,000	\$922	-\$33	\$45
Texas	\$1,102	\$1,204	\$1,062	-\$102	\$40
US	\$1,095	\$1,184	\$1,055	-\$89	\$40

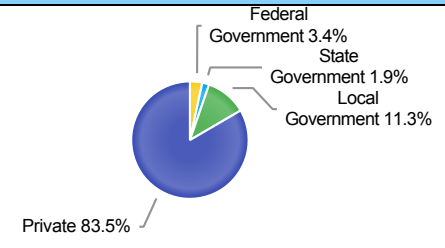
Employment by Industry (2nd Quarter 2019, Percent Change)

Industry	Employment	% of Total	% Quarterly Change	% Yearly Change
Natural Resources and Mining	16,327	1.5%	-0.6%	7.3%
Construction	59,220	5.5%	2.7%	4.7%
Manufacturing	52,765	4.9%	1.1%	1.6%
Trade, Transportation and Utilities	197,932	18.4%	0.4%	0.6%
Information	20,971	2.0%	0.5%	-3.2%
Financial Activities	82,645	7.7%	1.0%	-2.6%
Professional and Business Services	140,781	13.1%	1.3%	1.7%
Education and Health Services	278,161	25.9%	0.4%	1.8%
Leisure and Hospitality	148,633	13.8%	5.3%	1.9%
Other Services	30,905	2.9%	2.1%	1.7%
Public Administration	45,590	4.2%	-0.1%	0.7%

Employment by Size Class (2nd Quarter 2019)



Employment by Ownership (2nd Quarter 2019)



Employment by Industry (2nd Quarter 2019)

