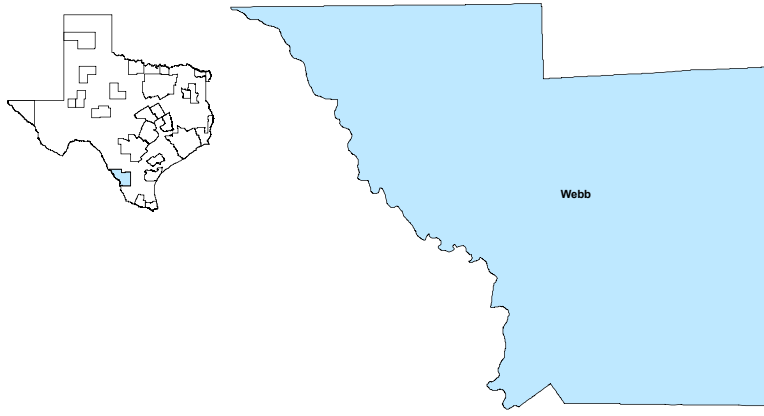


## Laredo MSA

October 2019



MSA Labor Force Statistics				
	Oct-19	Sep-19	Oct-18	Yearly Change
Civilian Labor Force	118,389	117,816	116,413	1,976
Employed	114,341	113,834	112,345	1,996
Unemployed	4,048	3,982	4,068	-20
Unemployment Rate	3.4%	3.4%	3.5%	-0.1%

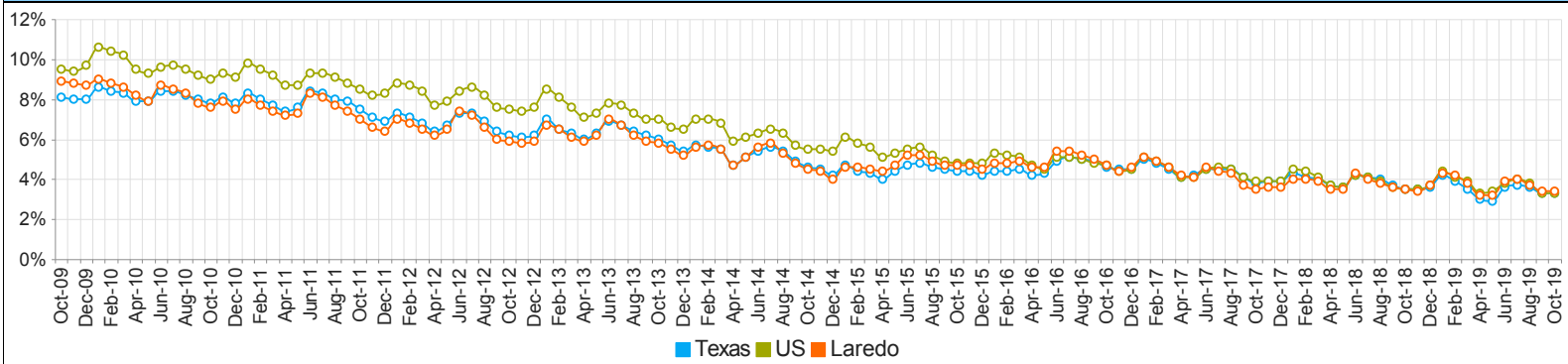
  

Texas Labor Force Statistics				
	Oct-19	Sep-19	Oct-18	Yearly Change
Civilian Labor Force	14,189,091	14,113,138	13,901,088	288,003
Employed	13,721,100	13,641,611	13,411,884	309,216
Unemployed	467,991	471,527	489,204	-21,213
Unemployment Rate	3.3%	3.3%	3.5%	-0.2%

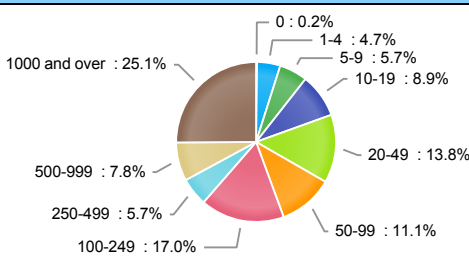
  

US Labor Force Statistics				
	Oct-19	Sep-19	Oct-18	Yearly Change
Civilian Labor Force	164,576,000	163,943,000	162,723,000	1,853,000
Employed	159,067,000	158,478,000	156,952,000	2,115,000
Unemployed	5,510,000	5,465,000	5,771,000	-261,000
Unemployment Rate	3.3%	3.3%	3.5%	-0.2%

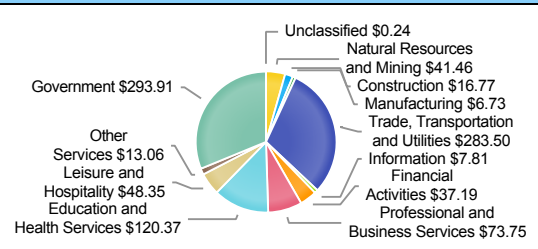
### Historical Unemployment Rates



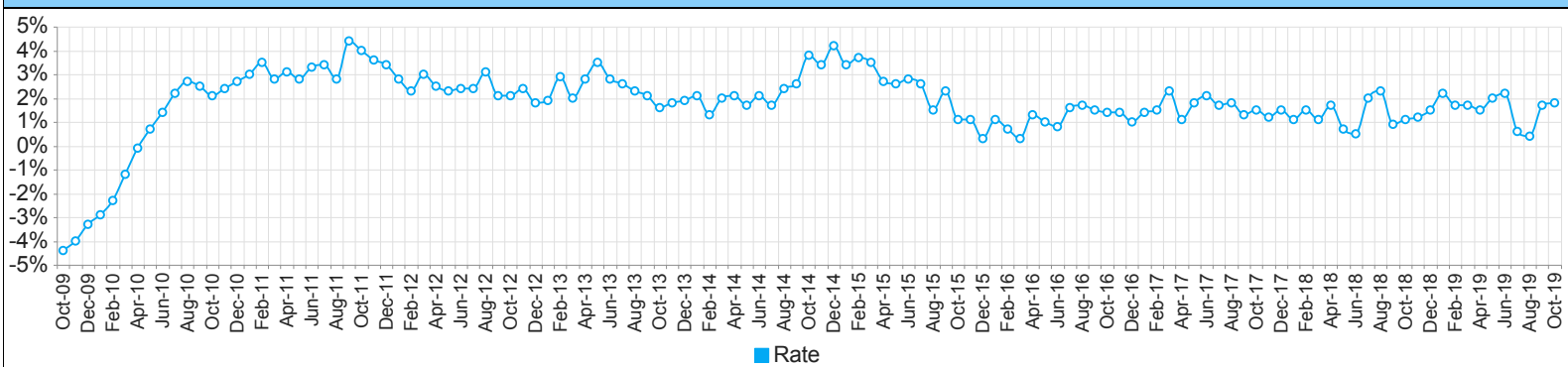
### Employment by Size Class (2nd Quarter 2019)



### Wages by Industry (in millions) (2nd Quarter 2019)



### Annual Growth Rate Total Non-agricultural employment



### Employment by Industry (October 2019)

Industry	Current Month Employment	% Monthly Change	% Yearly Change
Total Nonfarm	107,300	0.6%	1.8%
Mining, Logging and Construction	4,300	-2.3%	7.5%
Manufacturing	600	0.0%	0.0%
Trade, Transportation, and Utilities	32,000	0.9%	1.3%
Information	800	0.0%	14.3%
Financial Activities	3,800	0.0%	0.0%
Professional and Business Services	10,800	0.0%	3.8%
Education and Health Services	17,400	0.6%	1.8%
Leisure and Hospitality	11,700	-0.8%	3.5%
Other Services	2,400	0.0%	0.0%
Government	23,500	1.7%	0.0%

### Employment by Industry (October 2019)

