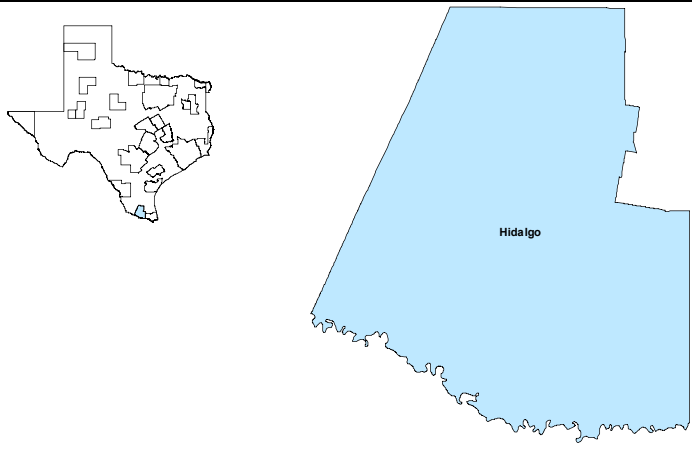


McAllen-Edinburg-Mission MSA

October 2019

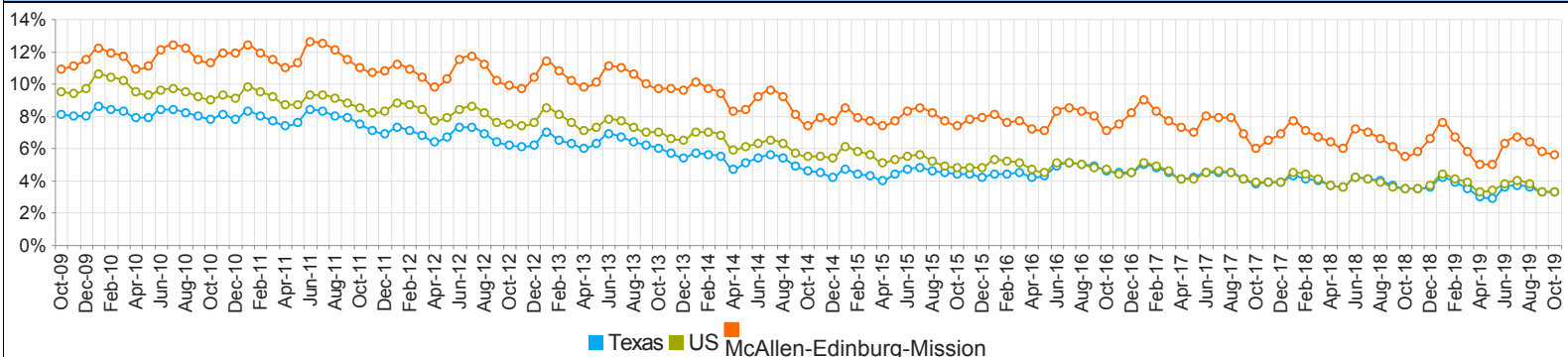


MSA Labor Force Statistics				
	Oct-19	Sep-19	Oct-18	Yearly Change
Civilian Labor Force	356,224	352,761	345,285	10,939
Employed	336,421	332,147	326,265	10,156
Unemployed	19,803	20,614	19,020	783
Unemployment Rate	5.6%	5.8%	5.5%	0.1%

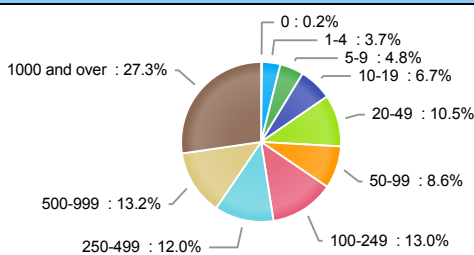
Texas Labor Force Statistics				
	Oct-19	Sep-19	Oct-18	Yearly Change
Civilian Labor Force	14,189,091	14,113,138	13,901,088	288,003
Employed	13,721,100	13,641,611	13,411,884	309,216
Unemployed	467,991	471,527	489,204	-21,213
Unemployment Rate	3.3%	3.3%	3.5%	-0.2%

US Labor Force Statistics				
	Oct-19	Sep-19	Oct-18	Yearly Change
Civilian Labor Force	164,576,000	163,943,000	162,723,000	1,853,000
Employed	159,067,000	158,478,000	156,952,000	2,115,000
Unemployed	5,510,000	5,465,000	5,771,000	-261,000
Unemployment Rate	3.3%	3.3%	3.5%	-0.2%

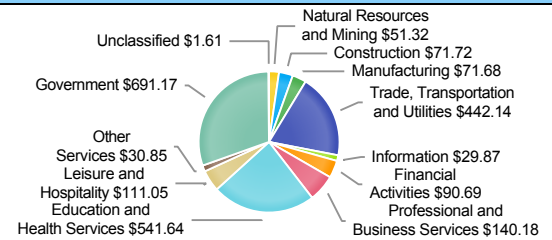
Historical Unemployment Rates



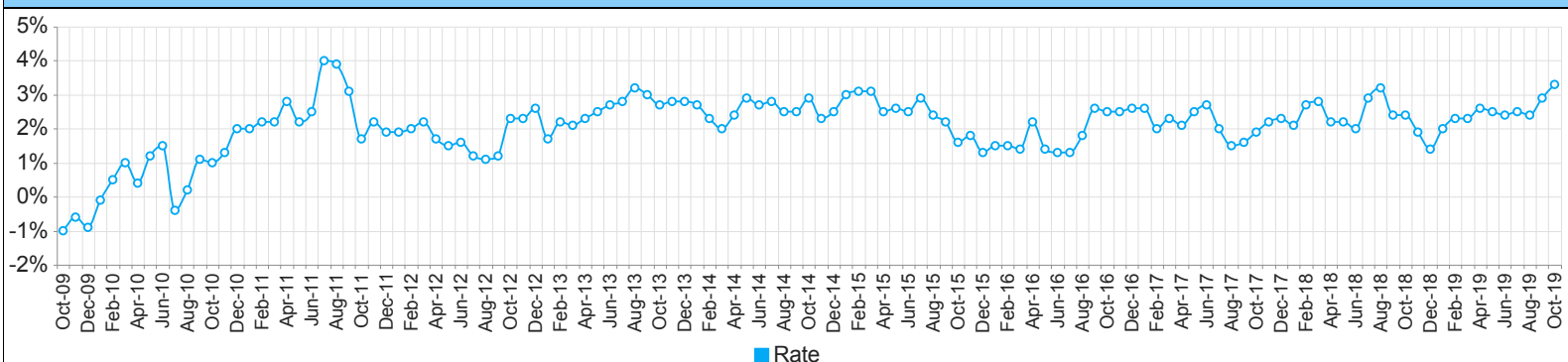
Employment by Size Class (2nd Quarter 2019)



Wages by Industry (in millions) (2nd Quarter 2019)



Annual Growth Rate Total Non-agricultural employment



Employment by Industry (October 2019)

Industry	Current Month Employment	% Monthly Change	% Yearly Change
Total Nonfarm	275,000	1.7%	3.3%
Mining, Logging and Construction	7,800	-1.3%	-6.0%
Manufacturing	6,800	1.5%	-2.9%
Trade, Transportation, and Utilities	55,900	2.0%	3.5%
Information	2,900	0.0%	3.6%
Financial Activities	9,000	0.0%	0.0%
Professional and Business Services	17,600	1.7%	1.1%
Education and Health Services	81,400	1.4%	7.2%
Leisure and Hospitality	25,700	-0.4%	2.0%
Other Services	6,100	1.7%	5.2%
Government	61,800	3.3%	1.5%

Employment by Industry (October 2019)

