

## Lower Rio Grande Workforce Development Area

October 2019



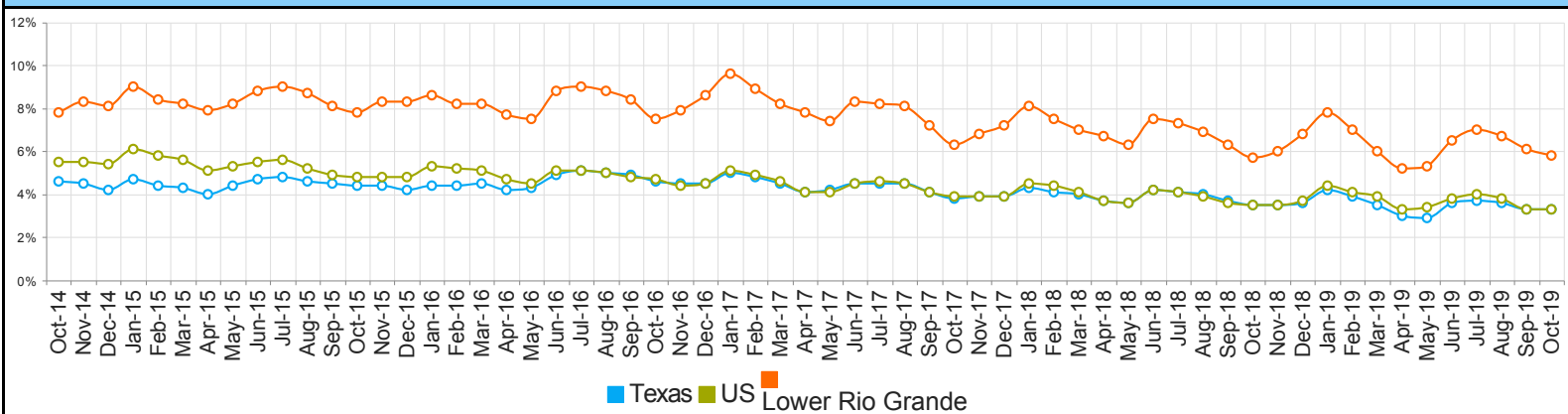
WDA Labor Force Statistics				
	Oct-19	Sep-19	Oct-18	Yearly Change
Civilian Labor Force	387,354	383,348	376,117	11,237
Employed	364,724	359,890	354,588	10,136
Unemployed	22,630	23,458	21,529	1,101
Unemployment Rate	5.8%	6.1%	5.7%	0.1%

Texas Labor Force Statistics				
	Oct-19	Sep-19	Oct-18	Yearly Change
Civilian Labor Force	14,189,091	14,113,138	13,901,088	288,003
Employed	13,721,100	13,641,611	13,411,884	309,216
Unemployed	467,991	471,527	489,204	-21,213
Unemployment Rate	3.3%	3.3%	3.5%	-0.2%

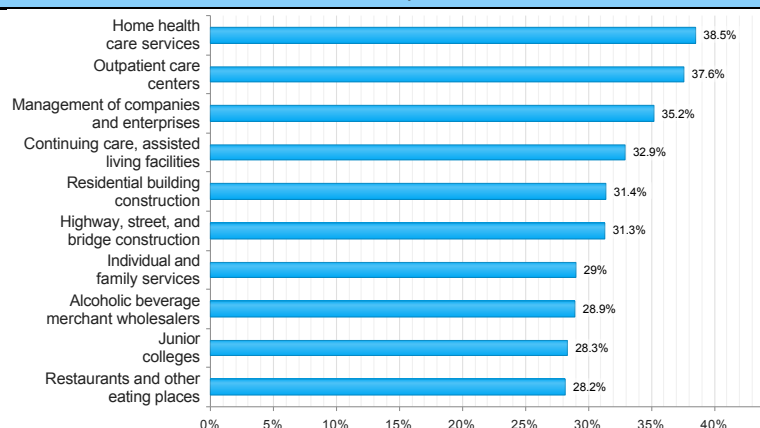
US Labor Force Statistics				
	Oct-19	Sep-19	Oct-18	Yearly Change
Civilian Labor Force	164,576,000	163,943,000	162,723,000	1,853,000
Employed	159,067,000	158,478,000	156,952,000	2,115,000
Unemployed	5,510,000	5,465,000	5,771,000	-261,000
Unemployment Rate	3.3%	3.3%	3.5%	-0.2%

Continued Claims for the Week of the 12th				
	Oct-19	Sep-19	Oct-18	Yearly Change
WDA	N/A	6,036	3,827	N/A
Texas	N/A	89,379	80,335	N/A

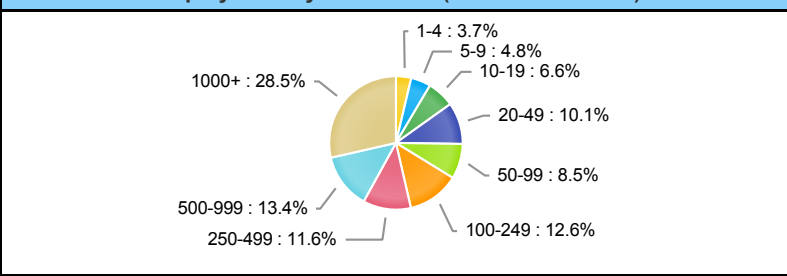
## Historical Unemployment Rates



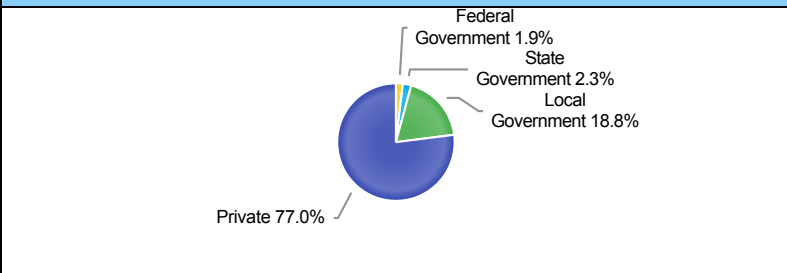
## Projected Top Ten Fastest Growing Industries in WDA (% Growth 2016-2026)



## Employment by Size Class (2nd Quarter 2019)



## Employment by Ownership (2nd Quarter 2019)



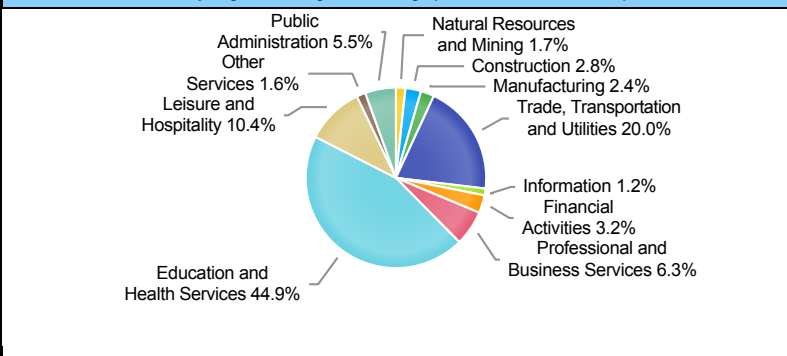
## Average Weekly Wage (2nd Quarter 2019)

	Q2 2019	Q1 2019	Q2 2018	Quarterly Change	Yearly Change
WDA	\$654	\$659	\$641	\$-5	\$13
Texas	\$1,102	\$1,204	\$1,062	\$-102	\$40
US	N/A	\$1,184	\$1,055	N/A	N/A

## Employment by Industry (2nd Quarter 2019, Percent Change)

Industry	Employment	% of Total	% Quarterly Change	% Yearly Change
Natural Resources and Mining	4,964	1.7%	-2.5%	-1.9%
Construction	8,095	2.8%	3.0%	2.0%
Manufacturing	6,899	2.4%	-4.6%	-1.6%
Trade, Transportation and Utilities	57,094	20.0%	0.6%	0.4%
Information	3,340	1.2%	6.0%	1.3%
Financial Activities	9,109	3.2%	-2.0%	-2.4%
Professional and Business Services	17,953	6.3%	-3.3%	-0.7%
Education and Health Services	127,911	44.9%	0.7%	2.3%
Leisure and Hospitality	29,580	10.4%	4.6%	6.7%
Other Services	4,465	1.6%	1.8%	0.3%
Public Administration	15,574	5.5%	1.3%	-0.4%

## Employment by Industry (2nd Quarter 2019)



\*The average weekly wage for U.S. for the latest quarter is not available. It will be updated shortly.